

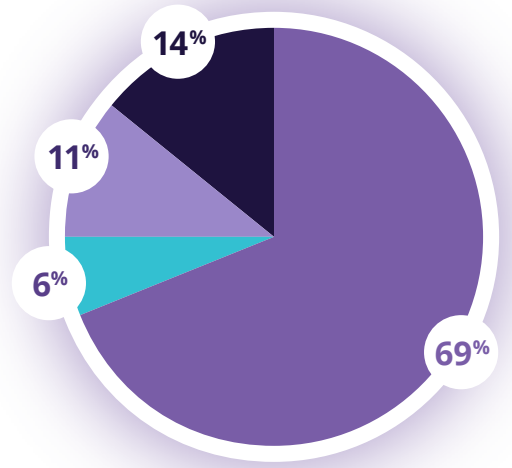
We surveyed over 500 users to find out how schools are utilising **SchoolsBuddy**.



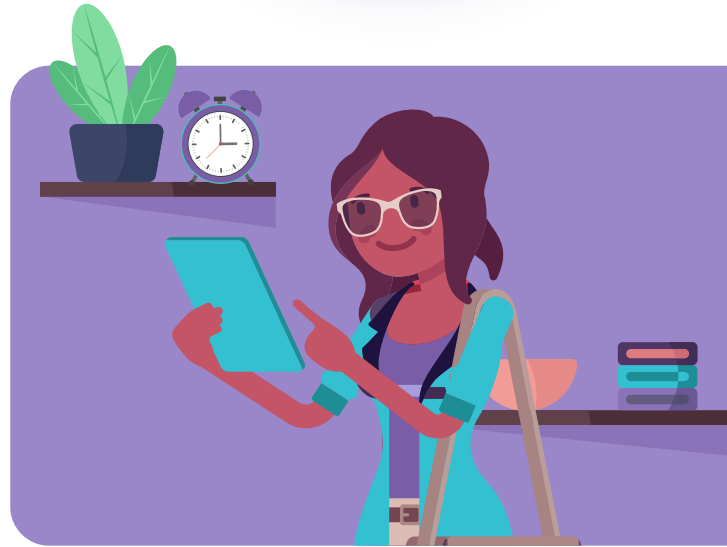
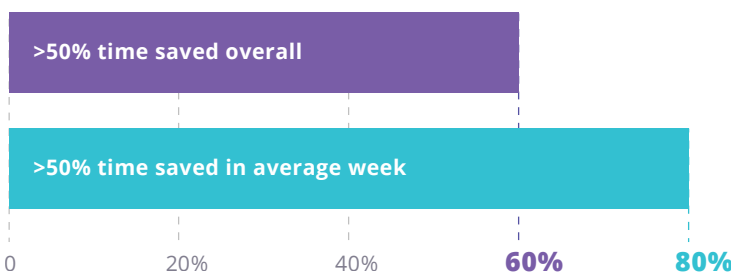
Almost **70%** of those surveyed said they use **SchoolsBuddy** on a daily basis



- Daily
- Twice a Week
- Once a Week
- Termly

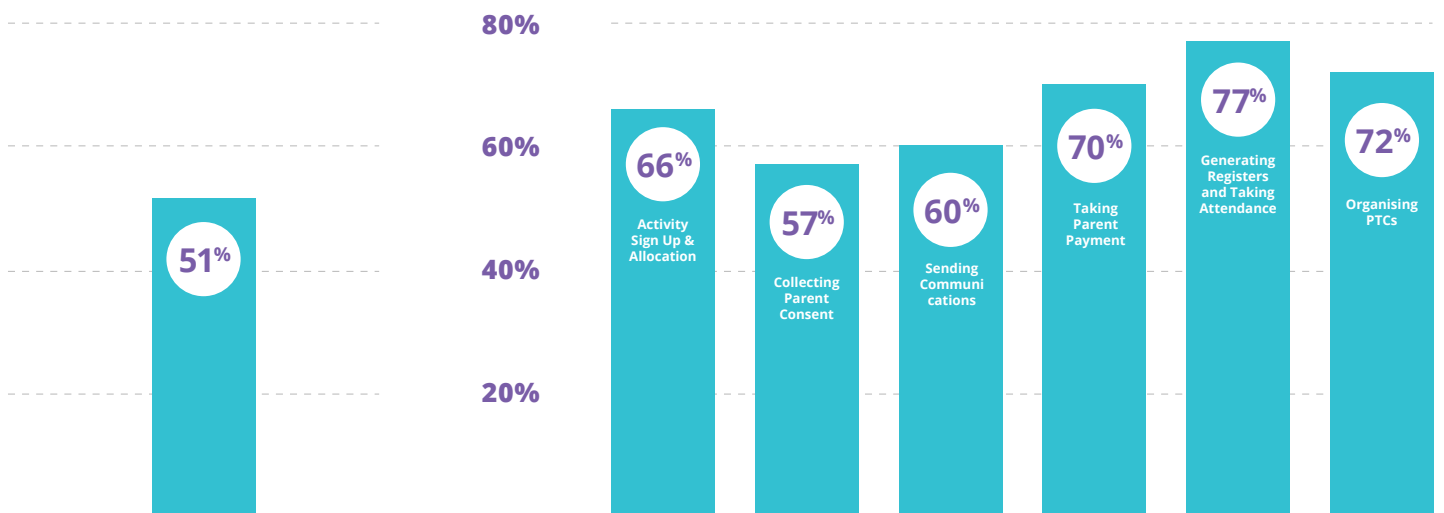


Customers reporting more than **50%** time savings by adopting **SchoolsBuddy**.



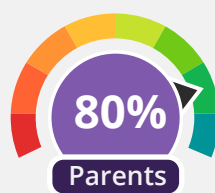
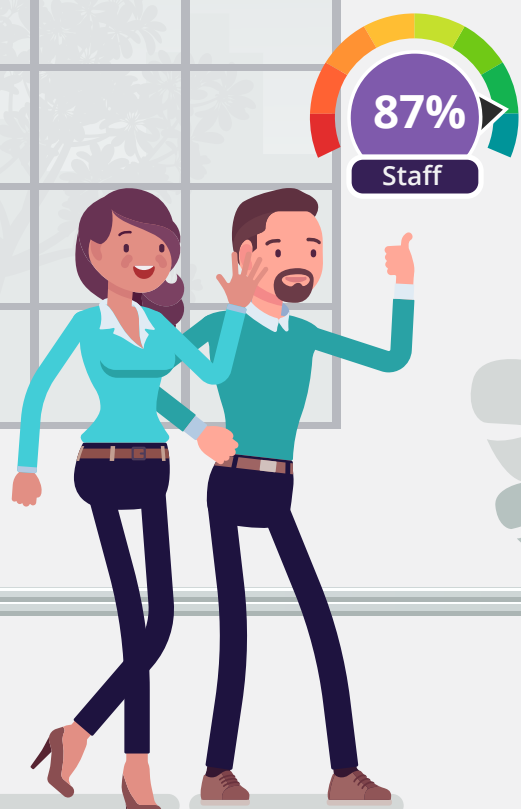
Schools consolidating 2 or more systems by moving to **SchoolsBuddy**.

Respondents reporting time savings of more than 50% across **SchoolsBuddy** functions.



☐☐ *The new staff have just had their minds blown today with SchoolsBuddy, it's really showing its usefulness every day!* ☐☐

TOM HITCHINGS,
THE BRITISH INTERNATIONAL SCHOOL OF SHANGHAI



SchoolsBuddy Satisfaction Rating 7 and above (Scale of 1-10)

